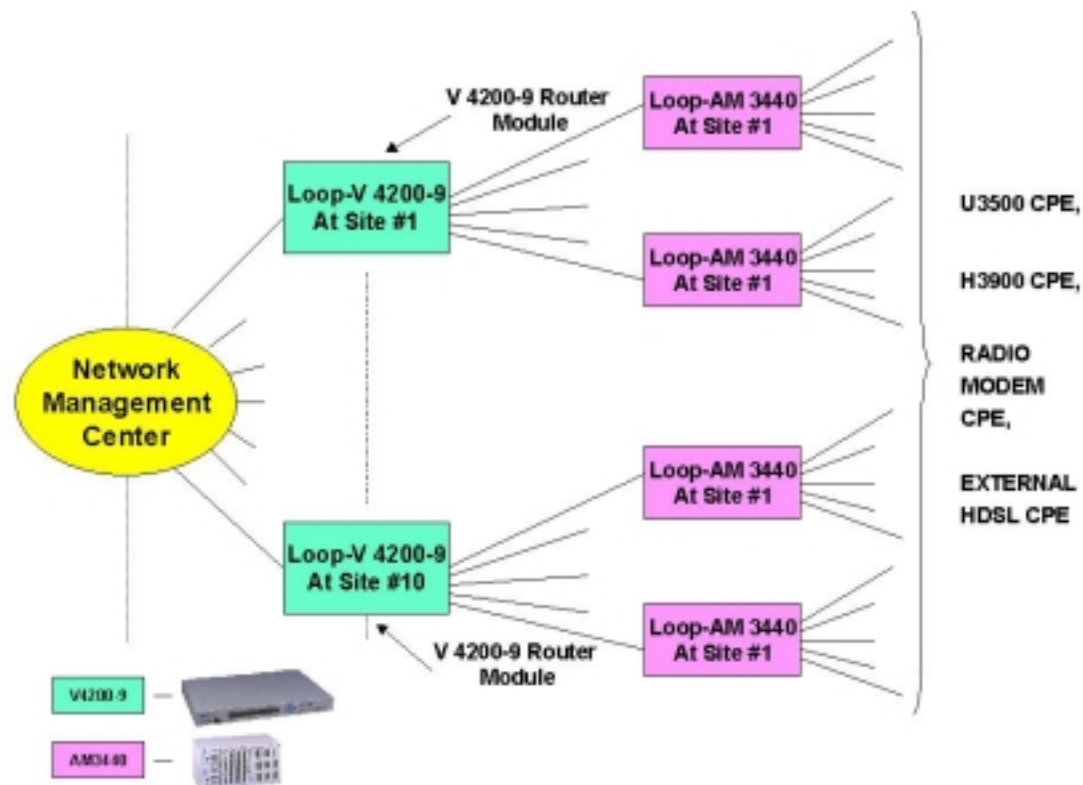


NMS (Network Management System) Integration in Asia for 50 Sites and their CPEs (Customer Premises Equipment)

The diagram below illustrates a Network Management System used in Asia to integrate and control 50 sites and their respective CPEs.



Problem

The customer needed a way to effectively manage a system over national networks, Internet and leased line modems.

Solution

By using Loop access equipment and Loopview software the customer realized a cost effective way of implementing network management. The Loopview management program needs to be loaded at the central Network Management Center only. NMS integration is done in such a way that all remote operations, administration and management information from 50 sites and their respective CPEs can be received at the central NMC. The Loop-V 4200-9 IAD's and the Loop-AM 3440 Quad E1/T Mux's can be remotely configured from the NMC,