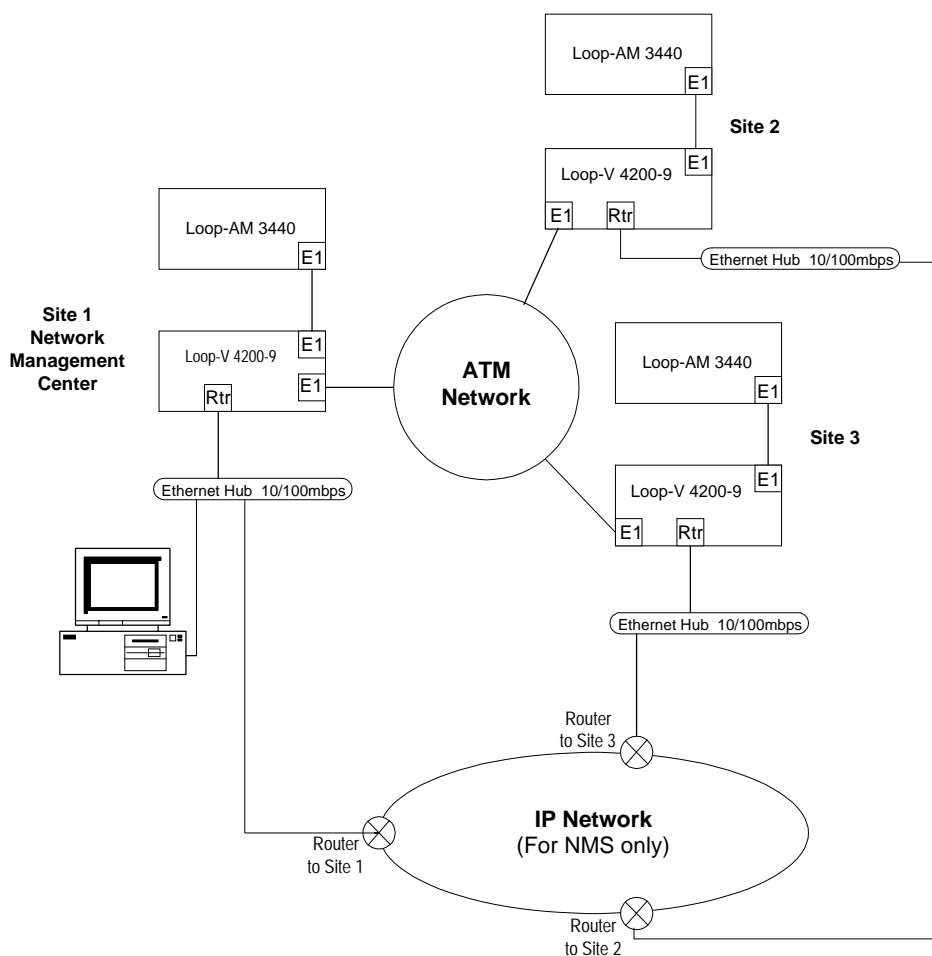


In-Band Management in Asia

The client here is an Asian firm providing basic voice and data services to corporate and institutional customers in suburban and rural locations. The client already had an existing IP Network and wanted to utilize it when implementing inband management. The diagram below illustrates how this was done. While only three sites are shown on the diagram, it is possible to have many more sites connected in this fashion.



Problem:

A client with an existing IP Network wanted to utilize that network to implement inband management.

Solution:

By using affordable Loop-V 4200-9 and Loop-AM 3440 units the client was able to integrate inband management into the existing IP Network.